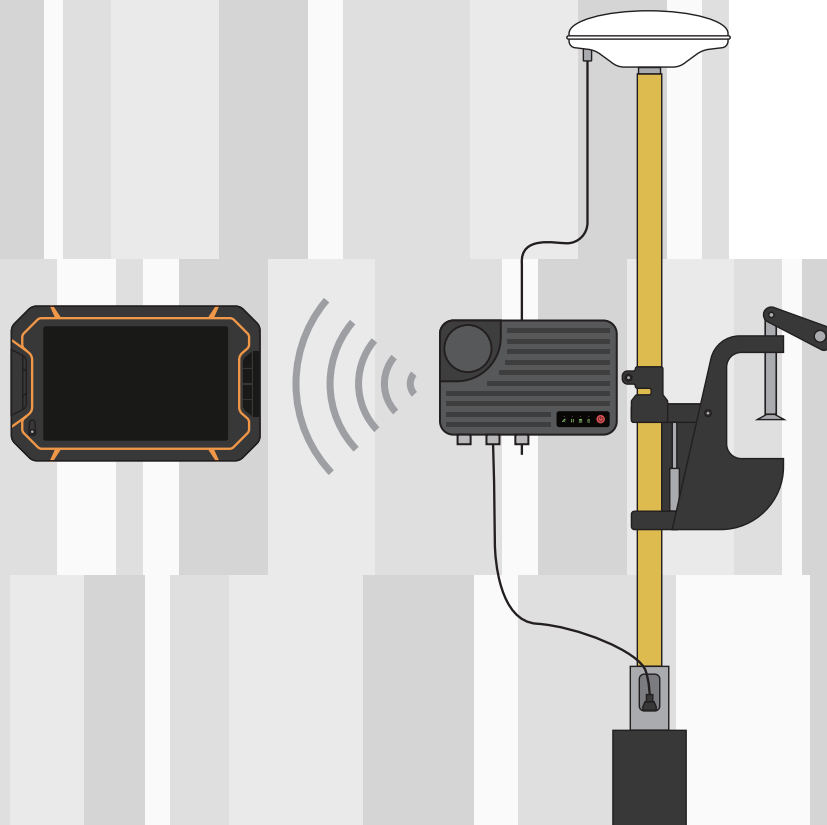




Alpha **Wi**

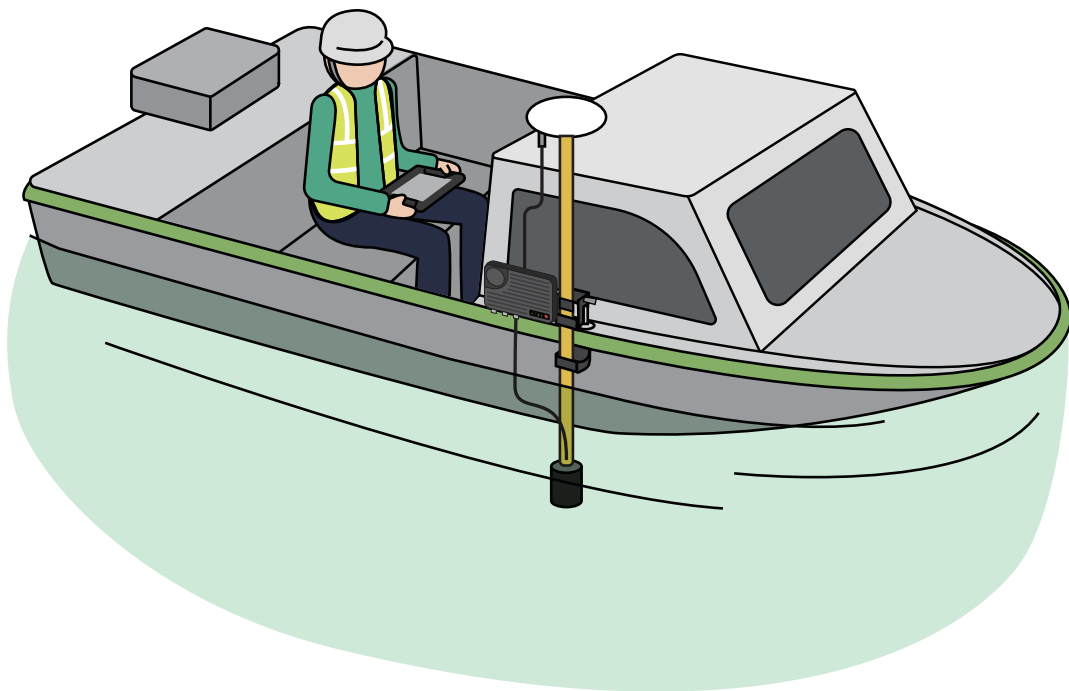
Portable Echo Sounder

Single Person Sounding System | Echo Sounder + Host + Power Supply + RTK all integrated



Alpha Wi Portable Echo Sounder

Alpha Wi portable echo sounder can survey areas with depth range up to 200m. With design, it can be quickly assembled and measured on site by a single person. It can be easily set and ready for work. With the standard marine fixing assembly, Alpha Wi can be easily fixed on the manned shipside or unmanned device.



Alpha Wi portable echo sounder consists of five parts: antenna, host, probe, rugged tablet, and rod. The host has integrated radio, 4G, RTK, sonar solution, power supply system. There is wireless connection between PDA and echo sounder host.



GNSS Inside



4G



Transceiver Radio



Built-in
Power Supply



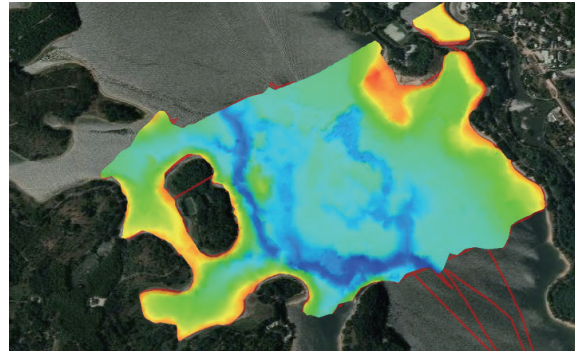
Route Planning



IP68

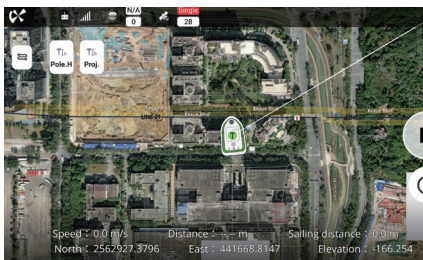
High-precision Water Depth Measurement

Alpha Wi echo sounder system provides resolution of 8mm water depth, $\pm 1\text{cm} + 0.1\%H$ depth measurement accuracy, excellent hardware performance combined with unique water depth detection algorithm and advanced software to eliminate interference at multiple levels to ensure the correct water depth. It's widely used in hydrological survey, waterway, dredging, storage capacity, river survey and other scenarios.



Full functional all-in-one software

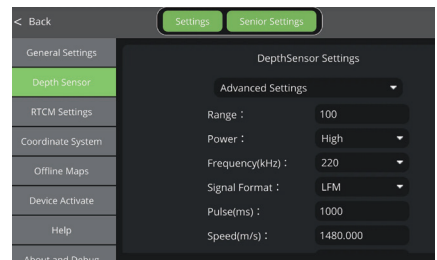
Hydro-DiMap software integrates differential system, coordinate system, project management, route planning, and data collection. Satellite base map and water depth can be superimposed. The saved point data is displayed in real time.



Various maps can be loaded



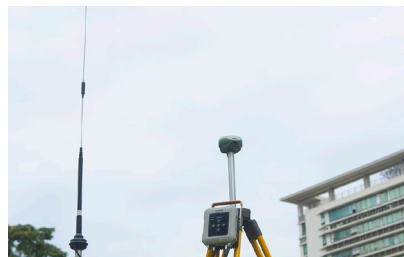
Route planning



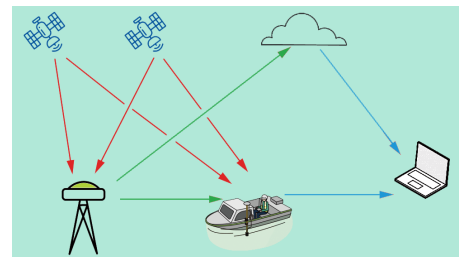
Easy to use

Multi-source RTCM

Alpha Wi supports Ntrip, Base stations, PPK post-processing, and high-precision Beidou position. It solves the problem of difficult fixation of the sea measurements and uninhabited areas, and ensure good performance for all scenarios.



Receive RTCM from Base station



PPK post-processing

Applicable platform



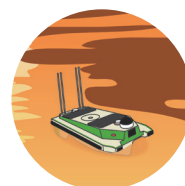
Speedboat



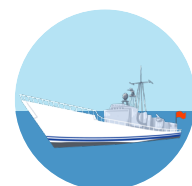
Fishing Boat



Rubber Boat



USV



Law Enforcement Boat

Professional Set



Receiver	×1
Charger	×1
Charger Cable	×1
Data Cable	×1
UHF Antenna	×2
Carrying Case	×1
Rod	×3
Adapter for Probe	×1
Tip	×1
Clip	×1
GNSS Antenna	×1
GNSS Connect Cable	×1
Rugged Table	×1
Manual	×1

Description



Sonar Performance

The sounding effect is better when it works at static, pure, and deep probe draft areas. Other wise, the data indicators will decrease.

Deeper Soundings

Supports customize lower hertz and deeper sounding indicators. The maximum support for customization is 300 meters.

Technical Specification

Echo Sounder	Frequency	200kHz
	Depth Range	0.2~200m
	Beam Angle	8°
	Resolution	8mm
	Max Ping Rate	20Hz
	Max Speed	10 knots
Rugged Table	Sonar Size	Ø70mm*105mm
	Screen	8 inches (1920*1200)
	Battery	11800mAh
System Configuration	Network	4G
	Processor	Cortex-A72
	RAM	4G
	GNSS	GPS、GLONASS、BDS、GALILEO、QZSS
	WiFi	2.4/5GHz IEEE 802.11b/g/n/ac
Radio	Network	4G
	Protocol	TRIMTALK450S、TRIMMARKIII、SOUTH9600、SOUTH19200、TRANSEOT、SATEL
	Frequency	410-470MHz
Power	Work Mode	Tx & Rx
	Input	18W PD
Port Indicator	Capacity	10000mAh
	TNC	GNSS*1、4G*1、WiFi*1
	5 Pin	For external data transmission
	7 Pin	RS232*1、RJ45*1
	Type-C	For charging and data transmission
Physical	Indicator	Satellite, Store, RTCM, Battery
	Size	175*130*60mm
	Weight	1200g
Environmental	Working Temperature	-20°C ~ +60°C
	Store Temperature	-30°C ~ +70°C
	Proof	IP68

*The above technical parameters are for your reference. The company reserves the right to change the design and planning of the product based on the actual product.

Alpha Surveying Technology Co.,Ltd.

📍 NO.9 Caipin Road, Science City Huangpu District, Guangzhou

☎ +86-20-82108930

🌐 www.alpha-surveying.com