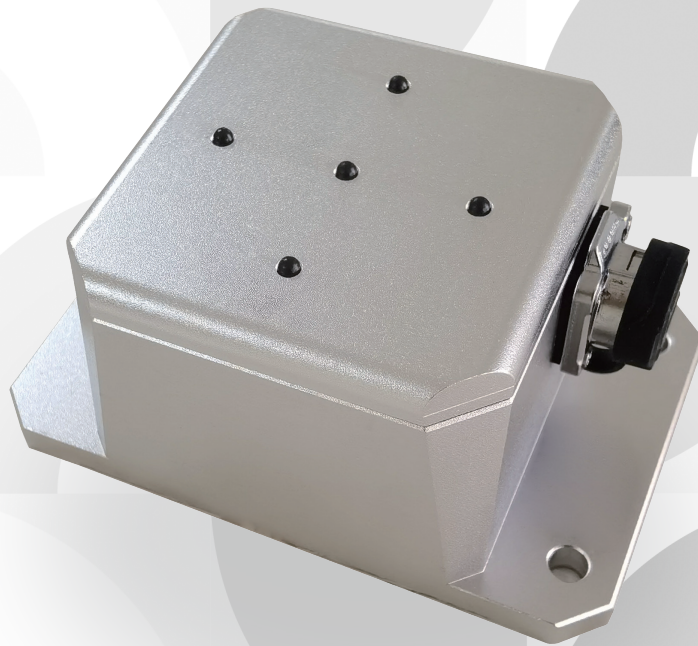




AlphaFi

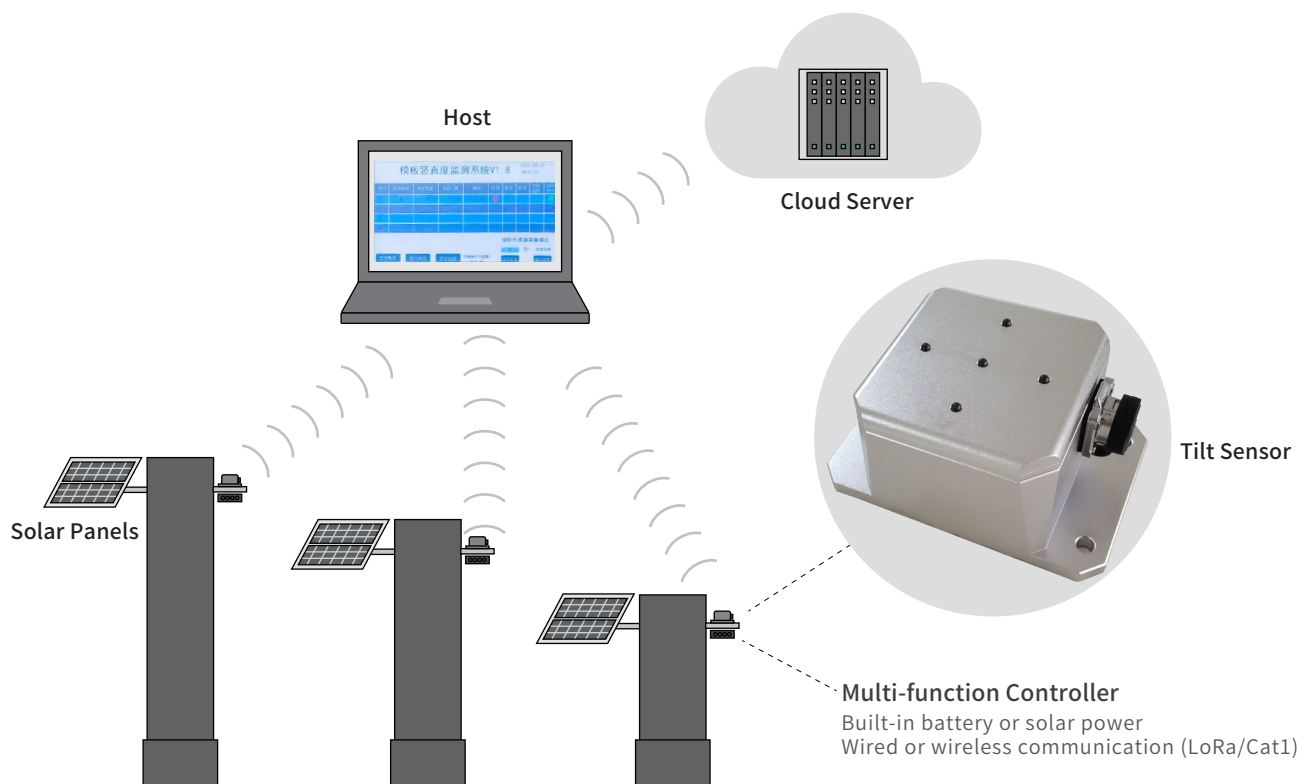
Tilt Sensor

Resolution up to 0.0001° | Range up to 30' | Stainless steel housing | Wired and wireless transmission solutions



Alpha Fi Tilt Sensor

Alpha Fi is a high-precision double-circle tilt angle measuring instrument, which can measure and output tilt angle data in two orthogonal directions. The sensor supports the output of high-precision and large-range inclination data and can meet the needs of using only one type of data or two types of data at the same time according to different application scenarios and different accuracy requirements.



Stable and Reliable

The entire inclination measurement system has strong waterproof, dustproof and impact resistance capabilities, and can work stably for a long time in complex operating environments



High Sensitivity

The highest support resolution 0.0001° output tilt value, angle measurement accuracy of up to $5''$



Dual Engine Dual Core

Dual-mode core with large-range MEMS dual-axis inclination sensor and high-precision dual-axis photoelectric sensor

Small And Strong

The size of the tilt sensor is only 10cm*6.4cm*4.8cm, which can be easily installed and used in various testing fields scene. The all-stainless steel shell has good electromagnetic shielding performance, and the protection level of IP67 also makes The equipment is not afraid of wind and rain, and the data is reliable and stable.



Support Extension



The tilt sensor is equipped with wired power supply and data transmission by default, and a wireless communication module is also optional. It can also monitor multiple inclinometers in a single device, and can detect up to 200 inclinometer data at the same time. The entire monitoring system supports the use of solar panels for power supply, and the data interface supports secondary development.



Tilt Resolution	F05:0.36"
	F10:0.36"
	F30:3"
Inclination Measurement	F05:5"
	F10:10"
	F30:30"
Working Range	F05:±6'
	F10:±10'
	F30:30'
Operating Temperature	F05:0°C~+30°C
	F10/30:-10°C~+50°C
Large Range Inclination Measurement Accuracy	30'
Large Range Of Work	30°
Communication Method	RS-232 (3.3V)、RS-485、CAN
Storage Temperature	-30°C~+60°C
Water/Dust Proof	IP67
Machine Casing	Cast Stainless Steel, Aluminum alloy
Weight	Stainless Steel Casing Version Is About 920g, Aluminum Casing Version Is About 390g
Dimension	100mm * 64mm * 48mm

*The above technical parameters are for your reference.The company reserves the right to change the design and planning of the product based on the actual product.

Alpha Surveying Technology Co.,Ltd.

📍 NO.9 Caipin Road, Science City Huangpu District, Guangzhou

☎ +86-20-82108930

🌐 www.alpha-surveying.com